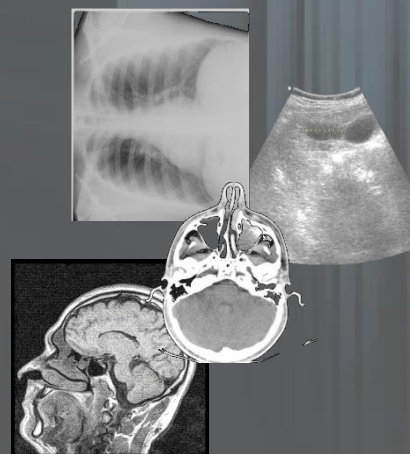


# ADNI DICOM WORKLIST BROKER

*SMART INTEGRATION !!*



Sinapbit

# INCREASE PRODUCTIVITY

*With ADNI DICOM WORKLIST BROKER interconnect your Hospital Information System (HIS) OR Radiology System (RIS) with your image devices , avoiding*

- 1. DATA PATIENT RELOAD*
- 2. TYPING ERRORS*

*And obtaining MORE TIME of devices for the diagnosis.*



# QUICK SETUP

*Don't think in  
extensive installation times  
or  
high costs*

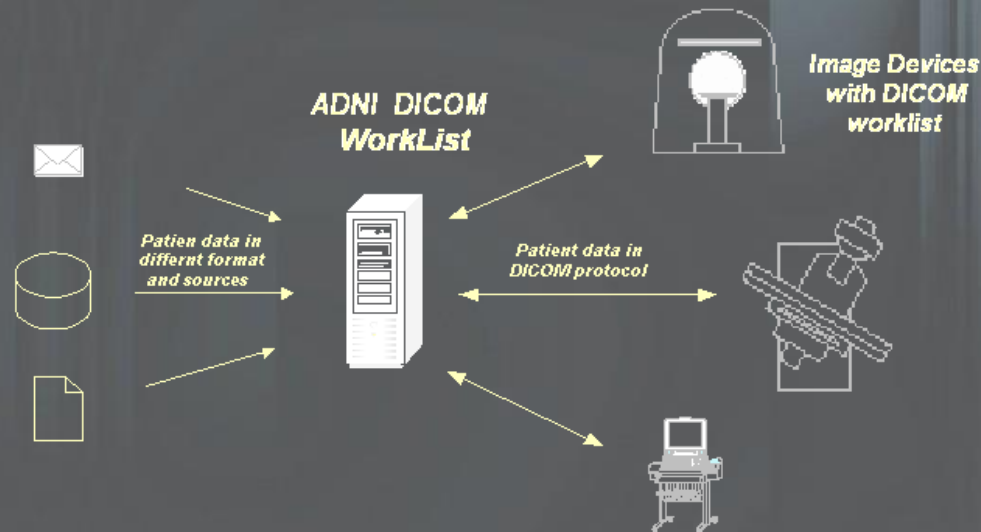
*Consider half an hour for image device and the system will  
be working for you with any application that is being used  
by the institution.*



Sinapbit

# HOW ADNI DICOM WORKLIST WORKS

*ADNI DICOM WORKLIST takes the information from the patient's appointment application, whatever it is, since it processes different types of inputs, and prepares the same one to be taken by the image devices, at the process **WITHOUT ANY HUMAN INTERVENTION**.*



# DIFFERENT KIND OF INPUTS

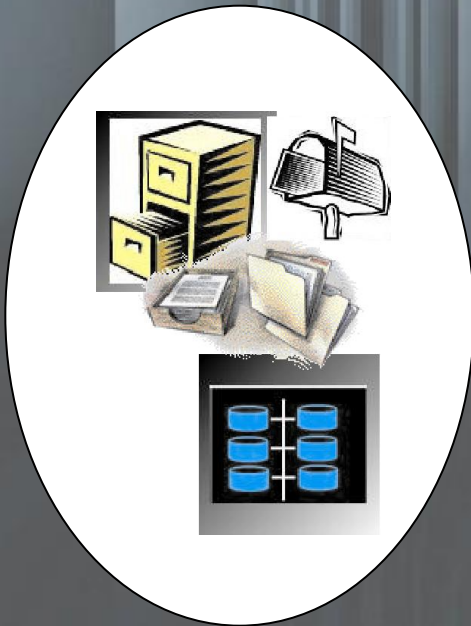
*THE POSSIBLE INPUTS ARE:*

*Databases*

*TXT Files*

*email.*

*HL7 Messages*



*You can use more than one input  
as data source and in any  
combination, two databases,  
database and txt file, etc.*



Sinapbit

# MANAGE DIFFERENT INPUT FORMATS

## STRUCTURED

1. *Miller,John,38,male*  
*lastname=Woodword*  
*name=Peter*  
*age=17*  
*[EOR]*
2. *<lastn>Wilson</lastn>*
3. *Database table*
4. *XML*
5. *HL7*

## NON STRUCTURED

➤ *Mr/s **Hilton** will come to our hospital on **27/10/02** for his/her **annual** check.*



# MANAGE DIFFERENT OUTPUT FORMATS ACCORDING TO MODALITY

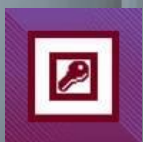
*According to the modality that is used different data is needed to be sent to image devices, therefore ADNI DICOM WORKLIST BROKER has a system of templates associated to each image device giving a complete flexibility in institutions that have several modalities.*





# WHAT DOES ADNI WORKLIST INTERCONNECT ?

Microsoft®  
SQL Server™



ORACLE®



HL7 Messages



MEDISON

AGFA 

SIEMENS

PHILIPS

ALOKA

e<sup>saote</sup>

 SonoSite.

D  
I  
C  
O  
M  
  
W  
O  
R  
K  
L  
I  
S  
T



TOSHIBA



Kodak

FUJI



Sinapbit



# HANDLING OF CONTINGENCIES

*At the possibility of fault of the image device or a reassignment for any reason, ADNI DICOM WORKLIST has an easy way to reallocate the patients worklist from one device to other only in one minute.*



# RETURN OF INVESION (ROI)

## ULTRASOUND CASE

*12hs work day*

*4 patients per hour*

*1.5 minutes patient data entry*

*TOTAL day time =  $12 \times 4 \times 1.5 = 72$  mins*

*TOTAL month time =  $72 \times 22 = 27$  hs !!!!*

*27 hs that you can use to do another studies.*



*Thanks for your time.*



Sinapbit